



Decoding Persistent Breakouts

A clinically guided self-assessment to understand why your acne persists—and what your skin needs next.



If you're dealing with acne in adulthood, the most frustrating part often isn't the breakout itself. It's the confusion around what's causing it.

You may have been told your acne is:

- hormonal
- stress-related
- product-induced
- diet-influenced

And while all of those words may apply, they don't explain where to start.

Here's the clarity most people never receive: Adult acne is multifactorial and requires a multi-modal plan to address it.

At Beautique Medical Spa, we've spent 20+ years helping women decode the patterns behind persistent adult acne—and we start by making sense of what your skin is trying to say.

In our practice, we typically see acne appear around three primary patterns:

- Hormonal signaling
- Skin barrier breakdown
- Microbiome balance

This guide helps you identify which of these patterns is most active in your skin right now.

Not so you can label yourself.

But so you can stop cycling through treatments that were never designed for your starting point.

This is not a diagnosis. It's just a way to translate what your skin has been communicating all along.

How to use this guide:

As you move through the next sections, place a ✓ next to the statements that reflect your experience over the past several months, not just a single breakout.

Most people identify with one dominant pattern, but may also identify some overlap with other categories. That's not uncommon. It's simply a clue about sequencing.

At Beautique Medical Spa, we map your skin's patterns and timing so we can anticipate flares—not just react to them.

THE HORMONAL ACNE PATTERN

INFLAMMATION DRIVEN BY HORMONAL SIGNALING

Your breakouts follow internal hormonal rhythms rather than surface-level triggers.

You may notice:

- Breakouts that cluster along the jawline or chin (more common in women)
- Worsening acne after stopping birth control or changing hormone therapy
- Acne that appears on the face, chest, back, or shoulders (more common in men)
- Breakouts that appear alongside mood changes, fatigue, bloating, or disrupted sleep
- Flares that line up with menstrual cycles, ovulation, or hormonal transitions such as PCOS or perimenopause
- Lesions that feel deeper, more tender, or slower to heal

What's happening beneath the skin:

- Estrogen and progesterone may no longer counterbalance each other, which can increase oil production and inflammation.
- Androgens (including testosterone & its byproducts) may stimulate oil glands more aggressively, leading to clogged pores & delayed cellular turnover.
- Stress, poor sleep, or blood sugar instability can amplify these effects by disrupting insulin and cortisol patterns.

Why common approaches fail:

Topical products can support the skin's surface, but they can't correct internal hormone signaling.

Without addressing the hormonal drivers:

- breakouts remain cyclical
- lesions heal slowly
- inflammation reactivates
- frustration builds despite "doing everything right"

Hormonal acne improves when internal signals are understood and supported and the skin is no longer treated in isolation.

THE BARRIER-IMPAIRED ACNE PATTERN

INFLAMMATION DRIVEN BY SKIN DEFENSE BREAKDOWN

Your skin is reactive because its protective barrier has been compromised.

You may notice:

- Skin stings, burns, or tightens easily
- Acne coexists with dryness, flaking, or sensitivity
- Products that seem to work for others irritate your skin
- Breakouts worsen after peels, microneedling, or frequent exfoliation

What's happening beneath the skin:

Your skin barrier is meant to act like a shield by holding moisture in and keeping irritants out. When that shield is compromised:

- Moisture escapes easily, leaving skin dehydrated
- Irritants penetrate more deeply, triggering redness, breakouts, & increased sensitivity
- The skin stays in a constant state of defense, making inflammation a mainstay
- Oil production may increase but because the skin is trying to protect itself

Why common approaches often make this worse:

When the barrier is impaired, stronger treatments don't restore balance. They usually increase irritation. Frequent exfoliation, rotating active ingredients, or "drying out" the skin can:

- slow healing
- prolong breakouts
- deepen inflammation
- increase the risk of hyperpigmentation or uneven texture

With this type of acne pattern, the key is to repair the barrier before correcting the breakouts.

THE MICROBIOME-DRIVEN ACNE PATTERN

WHEN BREAKOUTS REFLECT IMBALANCE RATHER THAN OBVIOUS IRRITATION

You may notice:

- Persistent texture, blackheads, or small bumps that don't fully clear
- Digestive symptoms like bloating, irregular digestion, or food sensitivity
- Acne that improves briefly, then returns (especially after antibiotics)
- Skin that feels "clogged" rather than irritated or sore
- Breakouts that linger even when redness is minimal

What's happening beneath the skin:

Your skin is home to a complex ecosystem of helpful bacteria that protect the barrier, regulate inflammation, and support healing. At the same time, your gut plays a key role in how inflammation is processed throughout the body.

When these systems fall out of balance:

Helpful skin bacteria become less diverse, making it easier for congestion and breakouts to persist

The gut-skin connection weakens, allowing inflammation to show up on the skin even when digestion seems only mildly off

The body's ability to clear metabolic waste slows, which can contribute to recurring congestion

Inflammation builds quietly over time, rather than flaring suddenly

This creates acne that feels stubborn, cyclical, and difficult to fully resolve.

Why common approaches often fall short:

Temporary improvements can happen when bacteria are suppressed. But without restoring balance, texture persists, flare cycles repeat, and congestion returns.

Lasting improvement requires supporting the microbiome (both on the skin and in the gut) so the environment becomes less favorable for breakouts over time.

It's not about doing more — it's about doing what works, in the right sequence, for your skin's biology and behavior.

Feels confusing because the skin doesn't always look angry or inflamed. Instead, it feels congested, uneven, & stubborn.

HOW TO UNDERSTAND YOUR RESULTS:

If One Pattern Stood Out Most:

This is your starting point. It highlights the system that needs support first before intensifying skincare, treatments, or protocols. Starting in the right place makes every next step more effective.

If Two or Three Patterns Resonated:

This doesn't necessarily mean your acne is complicated. It just means your skin needs structure, pacing, and coordination, often before adding in more treatments or products.

When multiple systems are involved, improvement comes from building stability first, then layering care thoughtfully.

This usually includes:

- Restoring resilience by calming inflammation & strengthening the skin's protective barrier
- Supporting nourishment & metabolism through steady meals, balanced blood sugar, & addressing common dietary triggers when appropriate
- Tending to gut & detox pathways that influence how inflammation shows up on the skin
- Reducing chronic stress load with consistent sleep, movement, & nervous system support
- Identifying hormonal influences that may be shaping breakouts beneath the surface
- Introducing targeted treatments intentionally, alongside (not instead of) these foundational supports

When these pieces work together, acne recovery feels less reactive and more sustainable. At Beautique Medical Spa, this is how we help patients finally stabilize their skin—so healing lasts.

What comes next:

If this guide helped you recognize your acne pattern, the next step is mapping out a plan.

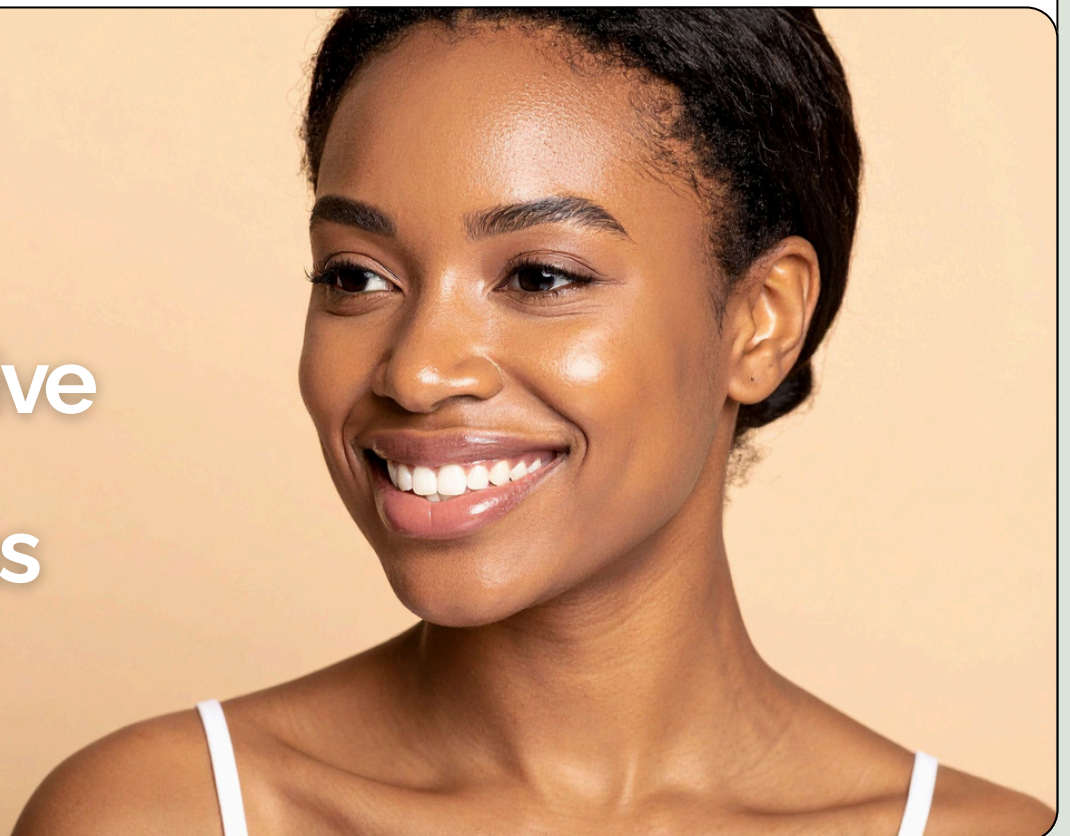
Most adult acne persists because treatment starts in the wrong place—or everything is addressed at once, without a specific strategy or sequence.

Clearer skin comes from:

- IDENTIFYING THE PRIMARY DRIVER
- STABILIZING THE SYSTEM THAT'S UNDER THE MOST STRAIN
- REBUILDING RESILIENCE BEFORE INTENSIFYING CARE
- LAYERING TREATMENTS IN A WAY YOUR SKIN CAN ACTUALLY SUSTAIN

If you're ready to move beyond guessing and begin working with your skin instead of against it, let's start with clarity—not intensity.

That's
what
integrative
care
allows us
to do.





How We Support Acne Recovery:

Inside our Integrative Acne Recovery Program, we'll:

- confirm your dominant acne pattern through clinical evaluation
- identify overlapping contributors that may be amplifying inflammation
- determine the correct order of care
- build a plan that supports your skin, hormones, microbiome, & stress physiology as one system

This approach is designed for adults who've already tried "everything" & are ready for clarity instead of trial and error.

Our goal isn't quick suppression. It's stability, predictability, & skin that can hold its progress over time.

At Beautique Medical Spa, we read these clues like data—so we can build a plan that finally makes sense for your skin.

If you're ready to move beyond guessing and begin working with your skin instead of against it, the next step is a personalized evaluation.

YOUR NEXT STEPS:

Struggling with Breakouts That Just Keep Coming Back?

If you've felt like your skin's been a mystery—flaring one week, calm the next, reactive to products that once worked—you're not alone. Adult acne isn't just about your skin. It's a pattern. A signal. A conversation your body is trying to have with you.

At Beautique Medical Spa, we specialize in decoding that conversation—so your skin finally feels predictable, supported, and clear.

Our signature “Get to Know You” Consultation is where it begins.

🔍 During this personalized session, we'll:
Map your acne pattern and skin physiology
Assess internal and external triggers
Build a customized, integrative strategy
Offer education—not just prescriptions

📧 As a thank-you for downloading this guide, you'll receive a \$50 gift card toward your Integrative Acne Recovery Program.

✅ Ready to stop guessing and start healing?

📱 Scan the QR code or visit BeautiqueMedicalSpa.com to schedule your consultation.

📍 Trusted in McAllen & the Rio Grande Valley for over 20 years

☎ Call 956-664-1234



LET'S CONNECT TO SCHEDULE
YOUR CONSULTATION